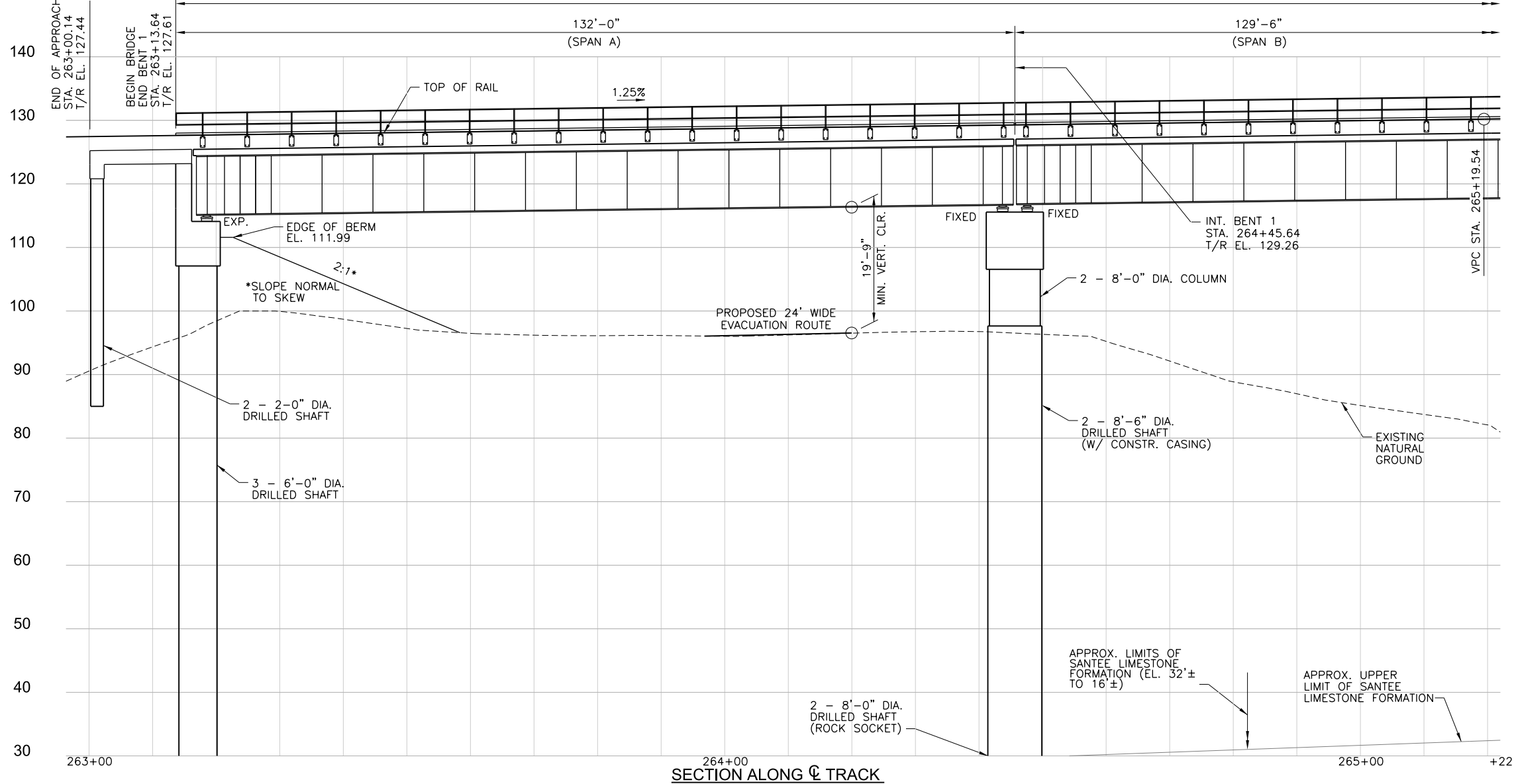
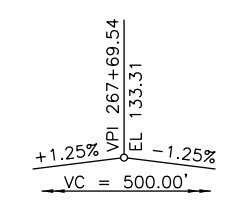
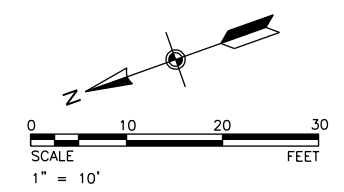
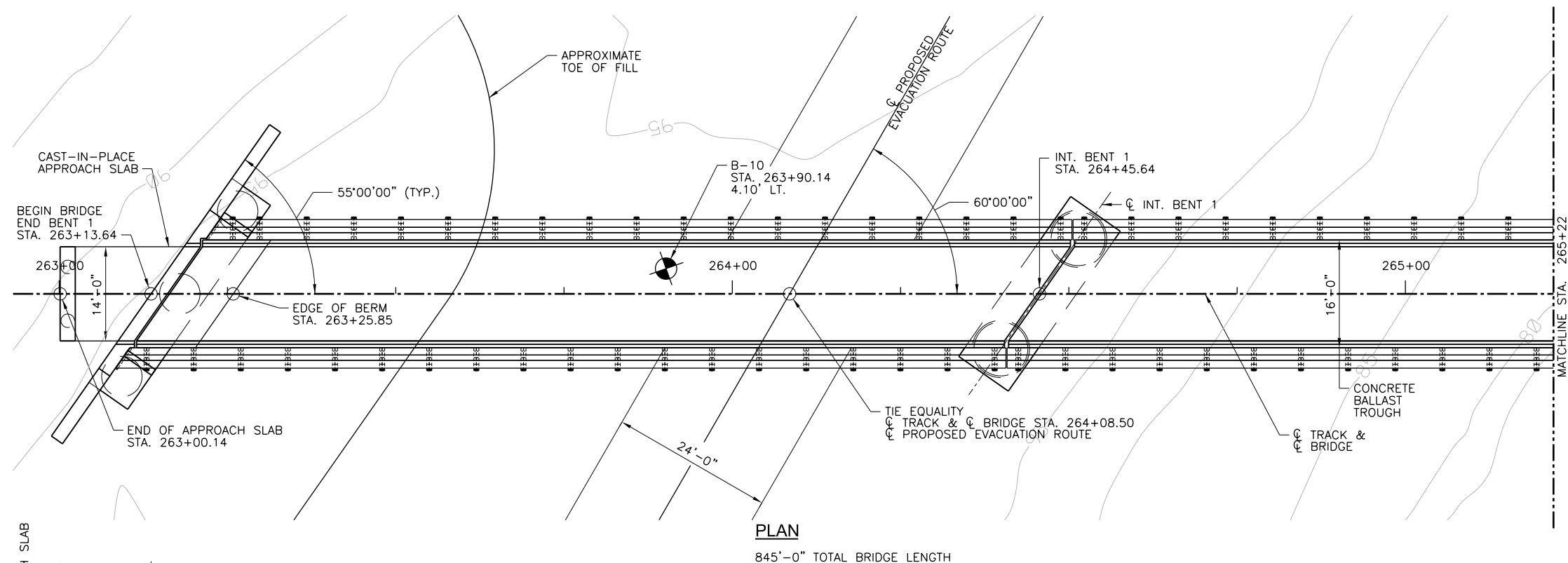


Appendix I  
**Bridge Drawings**

---



TRANSSYSTEMS  
 3/1/2018 10:22:48 AM p:\c\trainsyscorp\transyscorp-pw1\Documents\Projects\CR306 - Charleston\B306150019 - Camp Hall Rail Build\Nepa and Preliminary Engineering\304\_00 - Bldg\304\_01 - Standard Sheets\BP-01 - Plan and Elevation (1 of 4)



**TranSystems**  
 4400 LEEDS AVENUE  
 SUITE 430  
 NORTH CHARLESTON, SC 29405  
 PHONE: (843) 266-9300  
 FAX: (843) 529-9816

DOCUMENT IS FOR INTERIM REVIEW AND NOT INTENDED FOR CONSTRUCTION, BIDDING, OR PERMIT PURPOSES.  
**3/1/2018**

SANTEE COOPER - CAMP HALL  
 BERKELEY COUNTY, SOUTH CAROLINA  
**Palmetto RAILWAYS**  
 KEEPING BUSINESS ON TRACK

REVISIONS:	MARK	DATE	DESCRIPTION

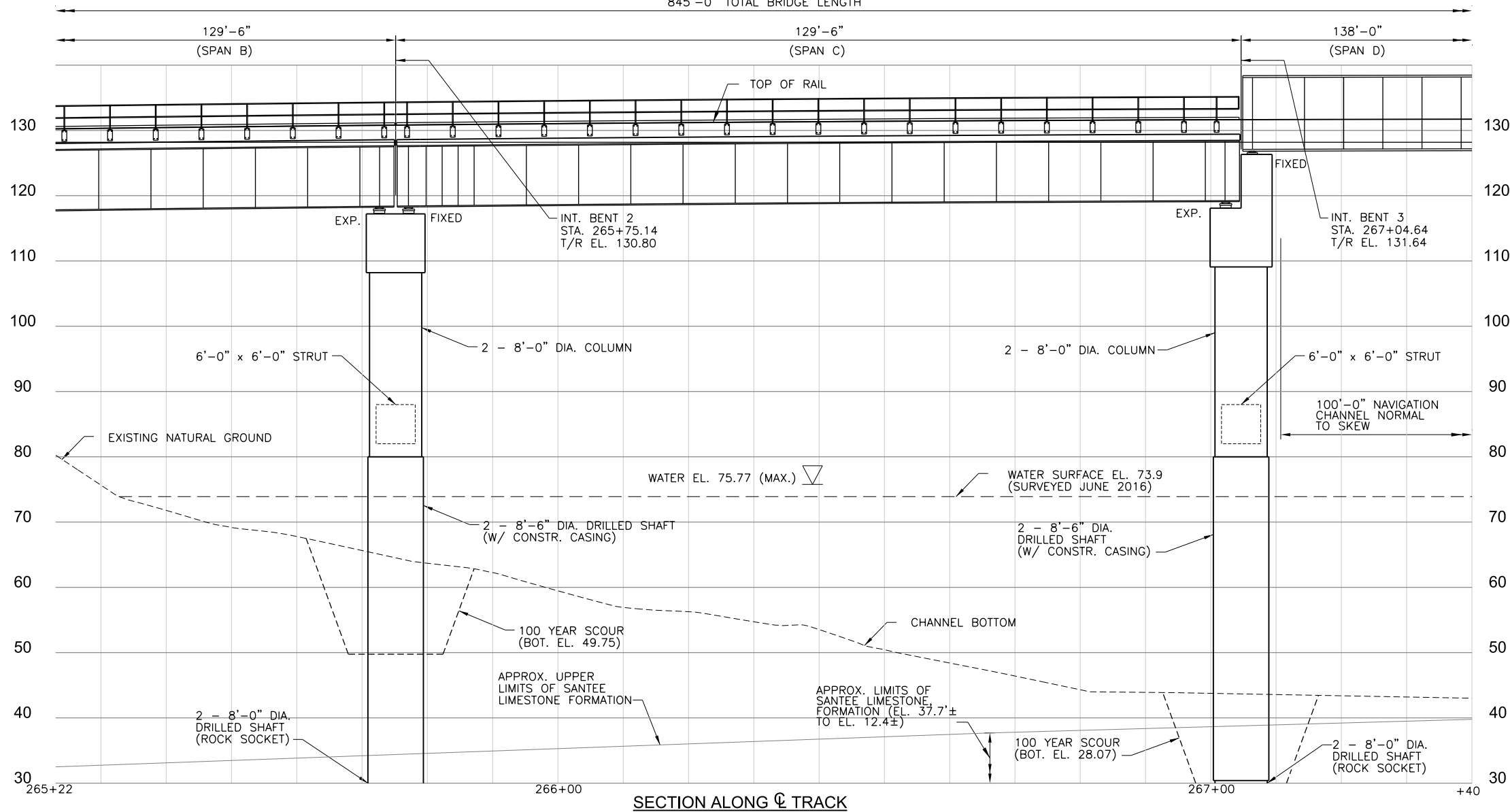
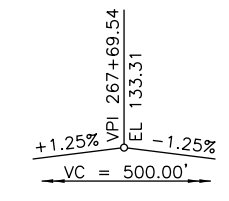
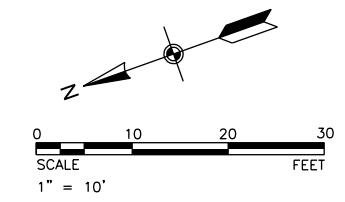
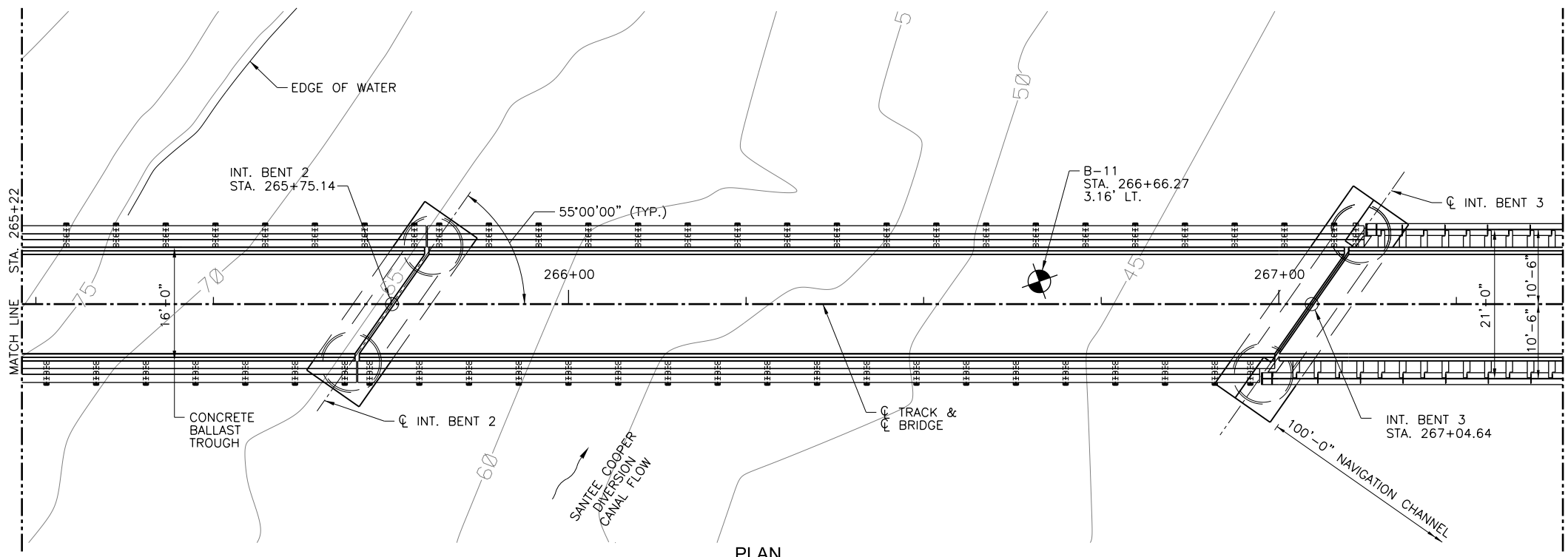
PROJ NO:	P306150019
SCALE:	1"=10'
DATE:	3/1/2018
DESIGNED BY:	RAH
DRAWN BY:	AJD
CHECKED BY:	MWR

SHEET TITLE:  
**BRIDGE PLAN AND ELEVATION (1 OF 4)**

SHEET NO.	S-BP-01
SHEET	7 OF 40

IF THIS DRAWING IS LESS THAN 22" X 34" IT IS A REDUCED SIZE DRAWING

TRANSSYSTEMS  
 3/1/2018 10:23:01 AM p:\c\trainsyscorp\transyscorp-pw1\Documents\Projects\CR306 - Charleston\B306150019 - Camp Hall Rail Build\Nepa and Preliminary Engineering\304\_00 - Bldg\304\_01 - Standard Sheets\BP-02 Plan and Elevation (2 of 4)



**TranSystems**  
 4400 LEEDS AVENUE  
 SUITE 430  
 NORTH CHARLESTON, SC 29405  
 PHONE: (843) 266-9300  
 FAX: (843) 529-9816

DOCUMENT IS FOR INTERIM REVIEW AND NOT INTENDED FOR CONSTRUCTION, BIDDING, OR PERMIT PURPOSES.  
**3/1/2018**

SANTEE COOPER - CAMP HALL  
 BERKELEY COUNTY, SOUTH CAROLINA  
**Palmetto RAILWAYS**  
 KEEPING BUSINESS ON TRACK

REVISIONS:	MARK	DATE	DESCRIPTION

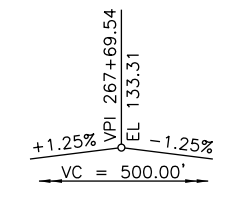
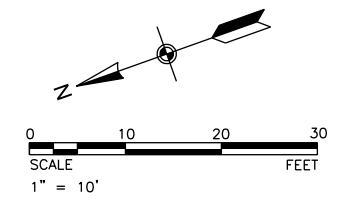
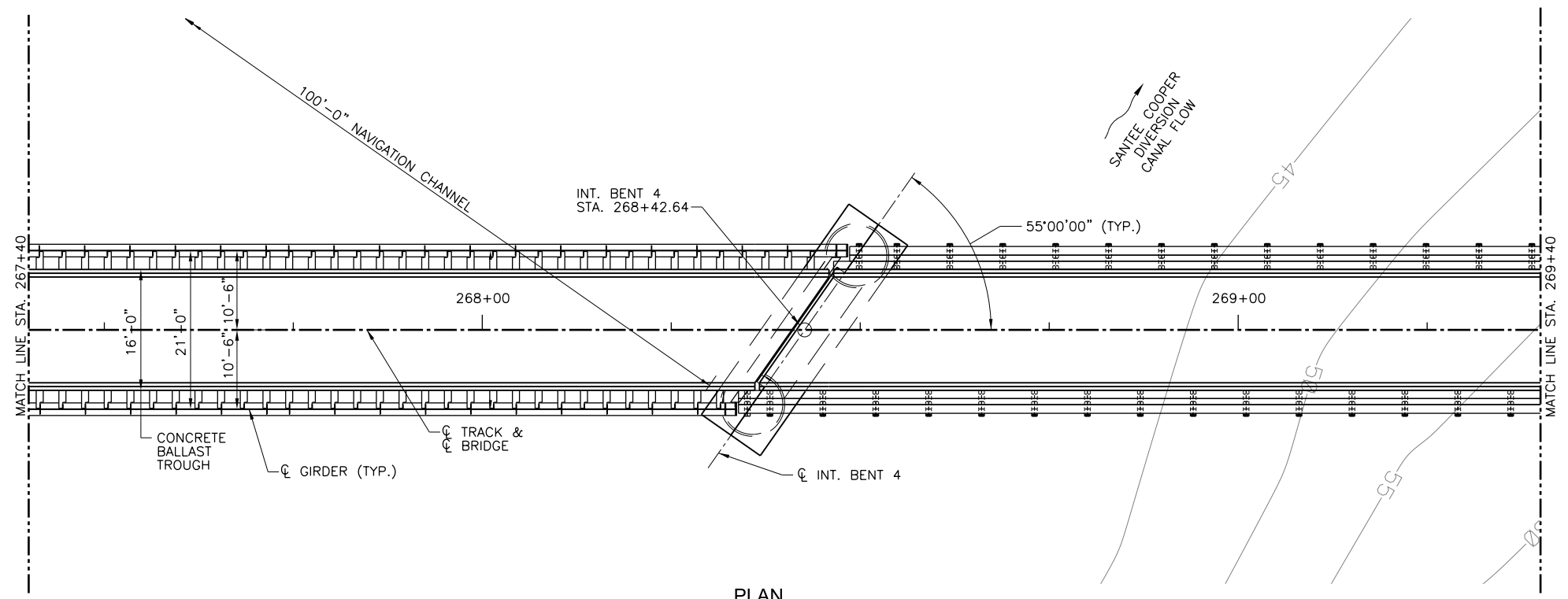
PROJ NO:	P306150019
SCALE:	1"=10'
DATE:	3/1/2018
DESIGNED BY:	RAH
DRAWN BY:	MJR
CHECKED BY:	MWR

SHEET TITLE:  
**BRIDGE PLAN AND ELEVATION (2 OF 4)**

SHEET NO.	S-BP-02
SHEET	8 OF 40

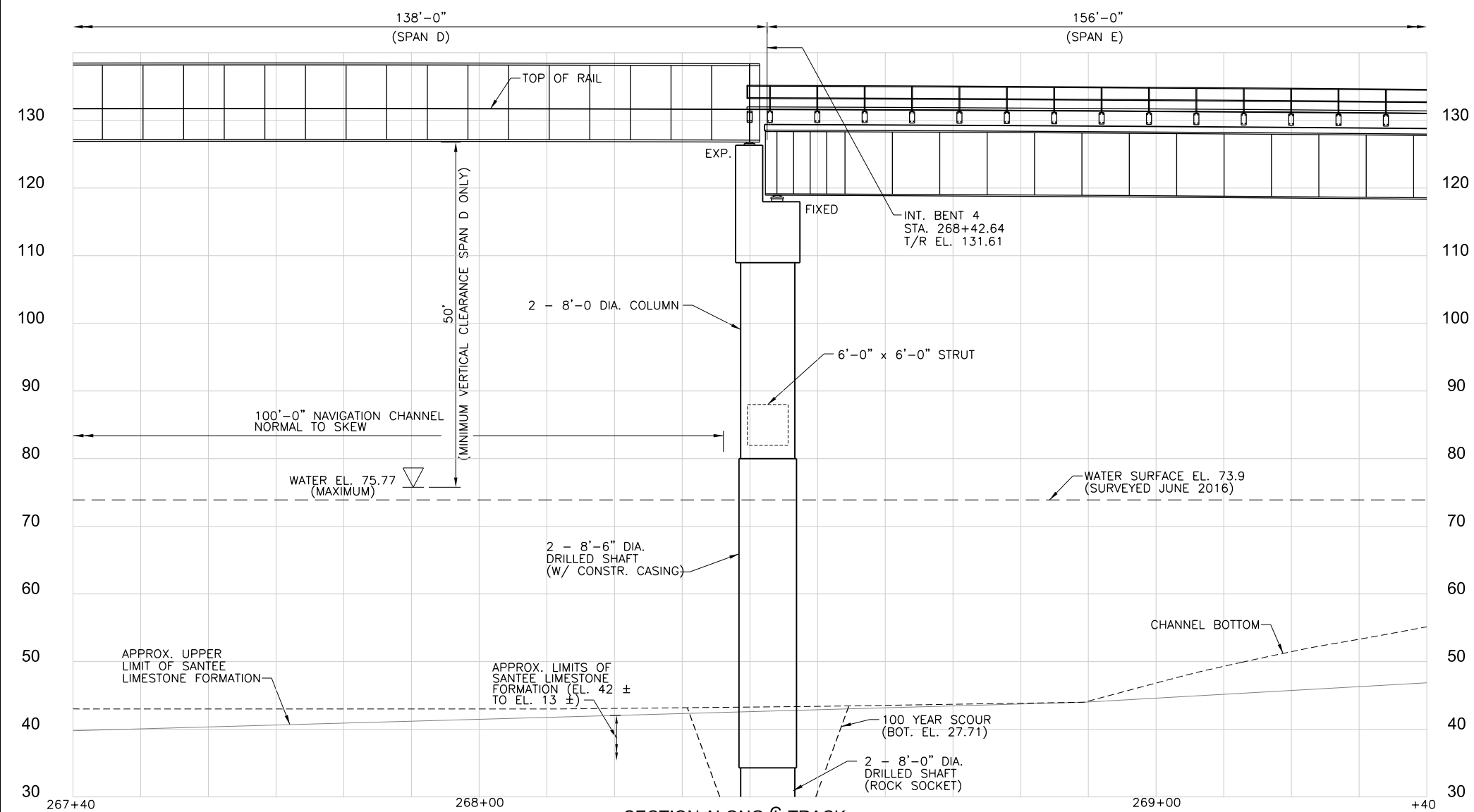
IF THIS DRAWING IS LESS THAN 22" X 34" IT IS A REDUCED SIZE DRAWING

TRANSSYSTEMS  
 3/1/2018 10:23:16 AM p:\w\l\p\l\h\01\_14-e\transyscorp\transyscorp-pw1\Documents\Projects\CR306 - Charleston\B306150019 - Camp Hall Rail Build\Nepa and Preliminary Engineering\304\_01 - Standard Sheets\BP-03 Plan and Elevation (3 of 4)



**PLAN**

845'-0" TOTAL BRIDGE LENGTH



**SECTION ALONG C TRACK**

**TranSystems**  
 4400 LEEDS AVENUE  
 SUITE 430  
 NORTH CHARLESTON, SC 29405  
 PHONE: (843) 266-9300  
 FAX: (843) 529-9616

DOCUMENT IS FOR INTERIM REVIEW AND NOT  
 INTENDED FOR CONSTRUCTION, BIDDING, OR  
 PERMIT PURPOSES.  
**3/1/2018**

SANTEE COOPER - CAMP HALL  
 BERKELEY COUNTY, SOUTH CAROLINA  
**Palmetto RAILWAYS**  
 KEEPING BUSINESS ON TRACK

REVISIONS:	MARK	DATE	DESCRIPTION

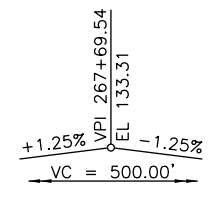
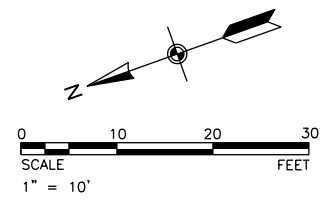
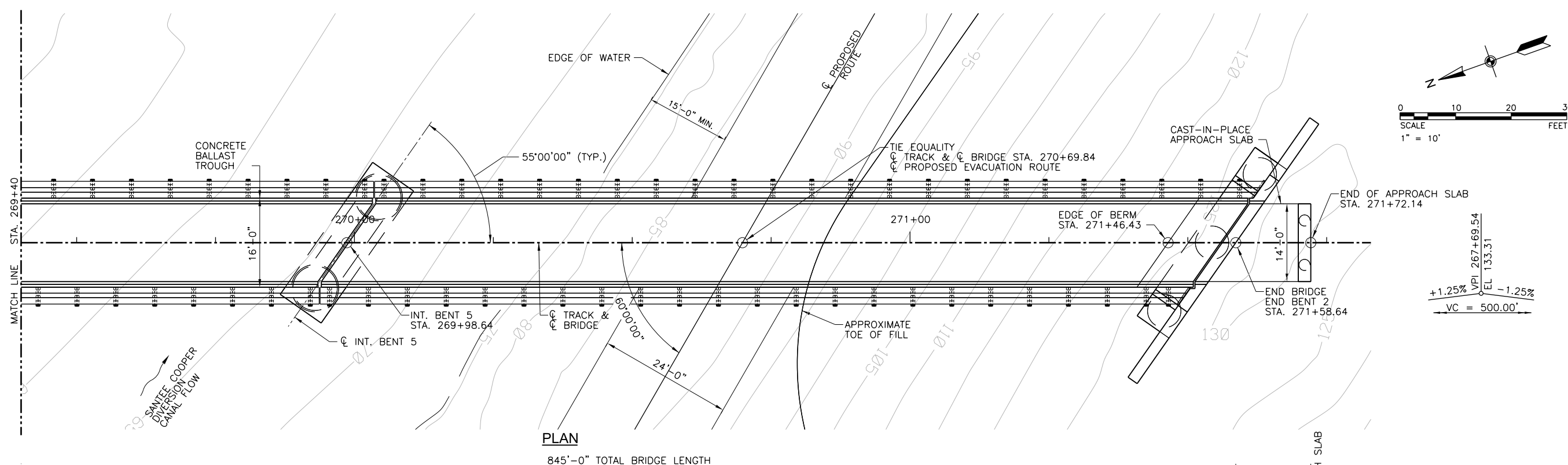
PROJ NO:	P306150019
SCALE:	1"=10'
DATE:	3/1/2018
DESIGNED BY:	RAH
DRAWN BY:	AJD
CHECKED BY:	MWR

SHEET TITLE:  
**BRIDGE PLAN AND ELEVATION (3 OF 4)**

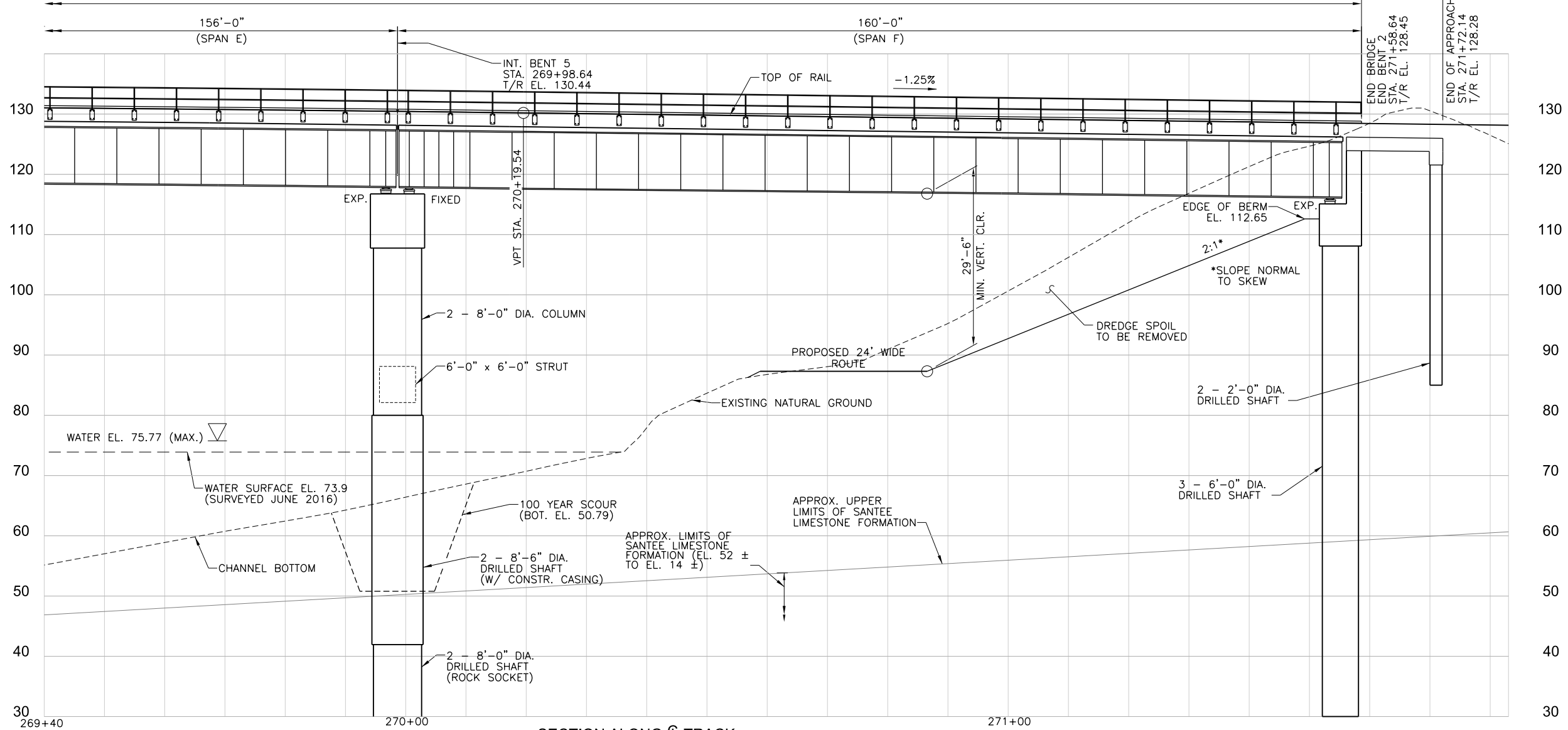
SHEET NO.	S-BP-03
SHEET	9 OF 40

IF THIS DRAWING IS LESS THAN 22" X 34" IT IS A REDUCED SIZE DRAWING

TRANSSYSTEMS  
 3/1/2018 10:23:29 AM p:\c\trainsyscorp\transyscorp-pw1\Documents\Projects\CR306 - Charleston\B306150019 - Camp Hall Rail Build\InNepa and Preliminary Engineering\304\_00 - Standard Sheets\BP-04 - Plan and Elevation (4 of 4)



**PLAN**  
845'-0" TOTAL BRIDGE LENGTH



**SECTION ALONG TRACK**

**TranSystems**  
 4400 LEEDS AVENUE  
 SUITE 430  
 NORTH CHARLESTON, SC 29405  
 PHONE: (843) 266-9300  
 FAX: (843) 529-9816

DOCUMENT IS FOR INTERIM REVIEW AND NOT INTENDED FOR CONSTRUCTION, BIDDING, OR PERMIT PURPOSES.  
**3/1/2018**

SANTEE COOPER - CAMP HALL  
 BERKELEY COUNTY, SOUTH CAROLINA

**Palmetto RAILWAYS**  
 KEEPING BUSINESS ON TRACK

REVISIONS:	MARK	DATE	DESCRIPTION

PROJ NO:	P306150019
SCALE:	1"=10'
DATE:	3/1/2018
DESIGNED BY:	RAH
DRAWN BY:	MJR
CHECKED BY:	MWR

SHEET TITLE:  
**BRIDGE PLAN AND ELEVATION (4 OF 4)**

SHEET NO.  
 S-BP-04  
 SHEET 10 OF 40

IF THIS DRAWING IS LESS THAN 22" X 34" IT IS A REDUCED SIZE DRAWING