



***SURFACE TRANSPORTATION BOARD***  
***Washington, DC 20423***

*Office of Environmental Analysis*

May 18, 2018

Bettye Shealy  
President  
Berkeley County Historical Society  
P.O. Box 397  
Saint Stephen, SC 29479

Re: Docket No. FD 36095, Palmetto Railways—Construction and Operation Exemption—In Berkeley County, South Carolina; **Invitation to Section 106 Consultation**

Dear Ms. Shealy:

This letter invites you to consult under Section 106 of the National Historic Preservation Act (Section 106) regarding the above-referenced rail line construction project. As you may know, on August 3, 2017, Palmetto Railways (Palmetto or Applicant) filed a petition with the Surface Transportation Board (Board), pursuant to 49 U.S.C. § 10502, for authority to construct and operate a 22.7-mile new rail line in Berkeley County, South Carolina.

The Board's Office of Environmental Analysis (OEA) and the United States Army Corps of Engineers, Charleston District (Corps) are conducting an environmental and historic preservation review of the proposed rail line construction project in compliance with the National Environmental Policy Act (NEPA) and related laws and regulations, including Section 106, and its implementing regulations at 36 C.F.R. Part 800.

This letter has two purposes:

- First, to learn whether Berkeley County Historical Society is interested in participating as a Section 106 Consulting Party. We have enclosed a Consultation Options Form (Attachment B) that we hope makes it easier for you to select the level of involvement that you are interested in. If we do not hear back from you, we will assume that you do not want to participate as a Section 106 Consulting Party.
- Second, to provide an opportunity for you to submit comments or information on either historic properties and/or potential effects to historic properties that may be located in the area and that should be afforded close attention in the environmental analysis.

For your reference, Attachment A to this letter includes a map of the proposed route currently being considered. Additional information on this project is available on the project website at [camphallrailnepa.com](http://camphallrailnepa.com). Attachment B is the Consultations Options Form discussed above.

Bettye Shealy, Berkeley County Historical Society

May 18, 2018

Page 2

Diana Wood of my staff is leading OEA's Section 106 consultation for the project. You may contact her at 202-245-0302 or [Diana.Wood@stb.gov](mailto:Diana.Wood@stb.gov) with any questions. You may also contact David Bauer of ICF OEA's independent third-party consultant, at [David.Bauer@icf.com](mailto:David.Bauer@icf.com).

Sincerely,

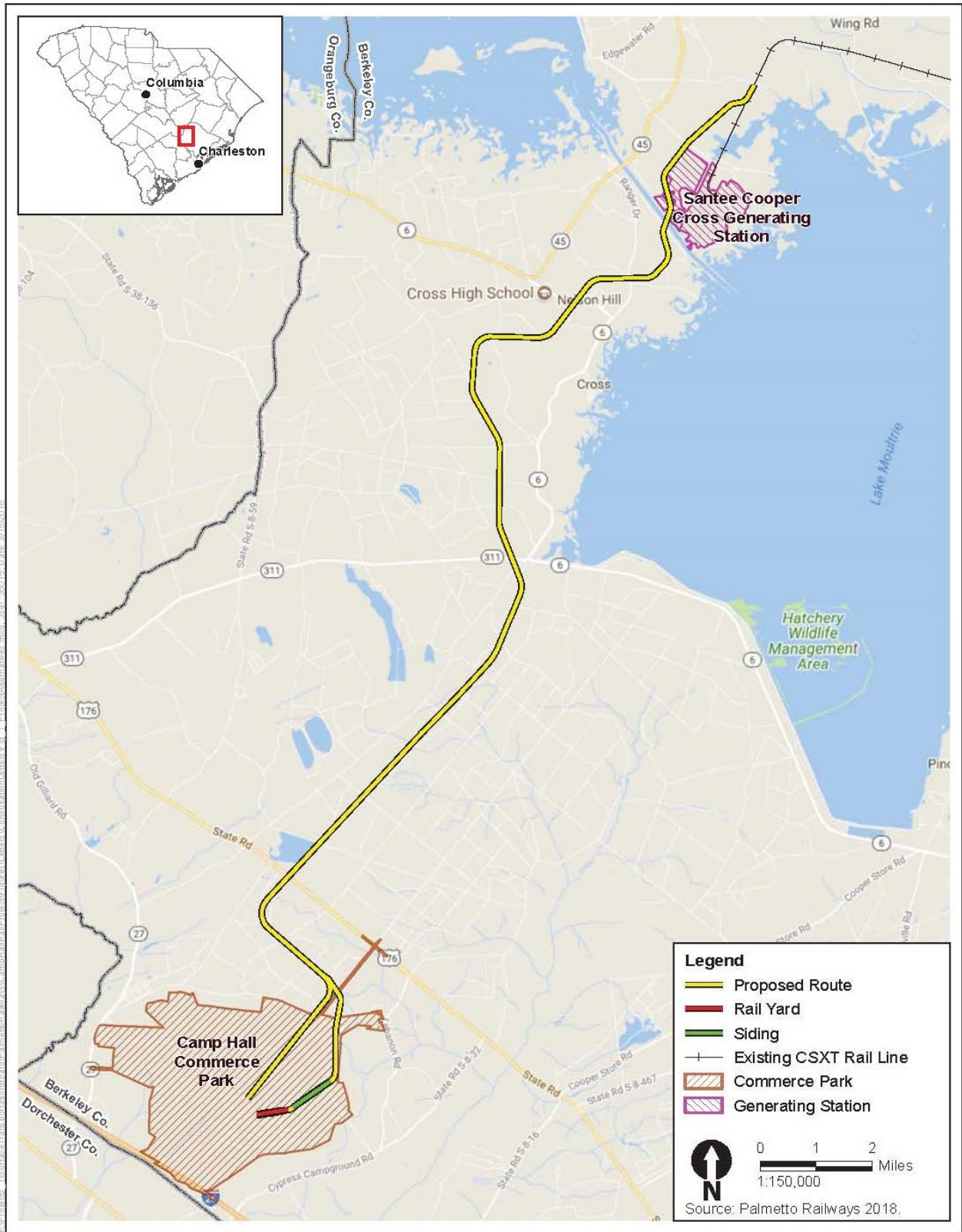
A handwritten signature in black ink that reads "Victoria Rutson". The signature is written in a cursive style with a large initial "V".

Victoria Rutson  
Director  
Office of Environmental Analysis

Attachments:

- A. Map of Proposed Alignment
- B. NHPA Section 106 Consultation Options Form

**ATTACHMENT A: MAP OF PROPOSED ROUTE**



**ATTACHMENT B: NATIONAL HISTORIC PRESERVATION ACT SECTION 106 CONSULTATION  
OPTIONS FORM**

Berkeley County Historical Society

Surface Transportation Board Docket No. FD 36095, Palmetto Railways – Construction and Operation  
Exemption—in Berkeley County, South Carolina.

Project Name: Palmetto Railways Proposed Rail Line

*Please check all the appropriate response(s) that apply from the list*

- \_\_\_\_\_ We have no interests associated with Palmetto Railways’ proposed rail line and further consultation with our organization is not required.
- \_\_\_\_\_ We want to continue to receive project information by mail and participate in the public involvement process.
- \_\_\_\_\_ We have an interest in Palmetto’s proposed rail line and want to participate as a “Consulting Party” in the Section 106 of the NHPA process.
- \_\_\_\_\_ We have included comments regarding potential historic properties in the project area and/or potential impacts to historic properties on the back of this form or on additional sheets.

Name of Berkeley County Historical Society designated contact for Section 106 Consultation for the Surface Transportation Board’s decision on whether to allow Palmetto Railways to construct and operate a new rail line in South Carolina:

**Please print**

Name: \_\_\_\_\_

Phone: \_\_\_\_\_

E-mail: \_\_\_\_\_

Signed: \_\_\_\_\_

Date: \_\_\_\_\_

Please mail to: Diana Wood  
FD No. 36095  
Surface Transportation Board  
c/o ICF  
8300 Lee Highway  
Fairfax, VA 22031



***SURFACE TRANSPORTATION BOARD***  
***Washington, DC 20423***

*Office of Environmental Analysis*

May 18, 2018

Keith Gourdin  
Berkeley North Historical Society  
153 Walnut Way  
Pineville, SC 29468

Re: Docket No. FD 36095, Palmetto Railways—Construction and Operation Exemption—In Berkeley County, South Carolina; **Invitation to Section 106 Consultation**

Dear Mr. Gourdin:

This letter invites you to consult under Section 106 of the National Historic Preservation Act (Section 106) regarding the above-referenced rail line construction project. As you may know, on August 3, 2017, Palmetto Railways (Palmetto or Applicant) filed a petition with the Surface Transportation Board (Board), pursuant to 49 U.S.C. § 10502, for authority to construct and operate a 22.7-mile new rail line in Berkeley County, South Carolina.

The Board's Office of Environmental Analysis (OEA) and the United States Army Corps of Engineers, Charleston District (Corps) are conducting an environmental and historic preservation review of the proposed rail line construction project in compliance with the National Environmental Policy Act (NEPA) and related laws and regulations, including Section 106, and its implementing regulations at 36 C.F.R. Part 800.

This letter has two purposes:

- First, to learn whether the Berkeley North Historical Society is interested in participating as a Section 106 Consulting Party. We have enclosed a Consultation Options Form (Attachment B) that we hope makes it easier for you to select the level of involvement that you are interested in. If we do not hear back from you, we will assume that you do not want to participate as a Section 106 Consulting Party.
- Second, to provide an opportunity for you to submit comments or information on either historic properties and/or potential effects to historic properties that may be located in the area and that should be afforded close attention in the environmental analysis.

For your reference, Attachment A to this letter includes a map of the proposed route currently being considered. Additional information on this project is available on the project website at [camphallrailnepa.com](http://camphallrailnepa.com). Attachment B is the Consultations Options Form discussed above.

Keith Gourdin, Berkeley North Historical Society

May 18, 2018

Page 2

Diana Wood of my staff is leading OEA's Section 106 consultation for the project. You may contact her at 202-245-0302 or [Diana.Wood@stb.gov](mailto:Diana.Wood@stb.gov) with any questions. You may also contact David Bauer of ICF OEA's independent third-party consultant, at [David.Bauer@icf.com](mailto:David.Bauer@icf.com).

Sincerely,

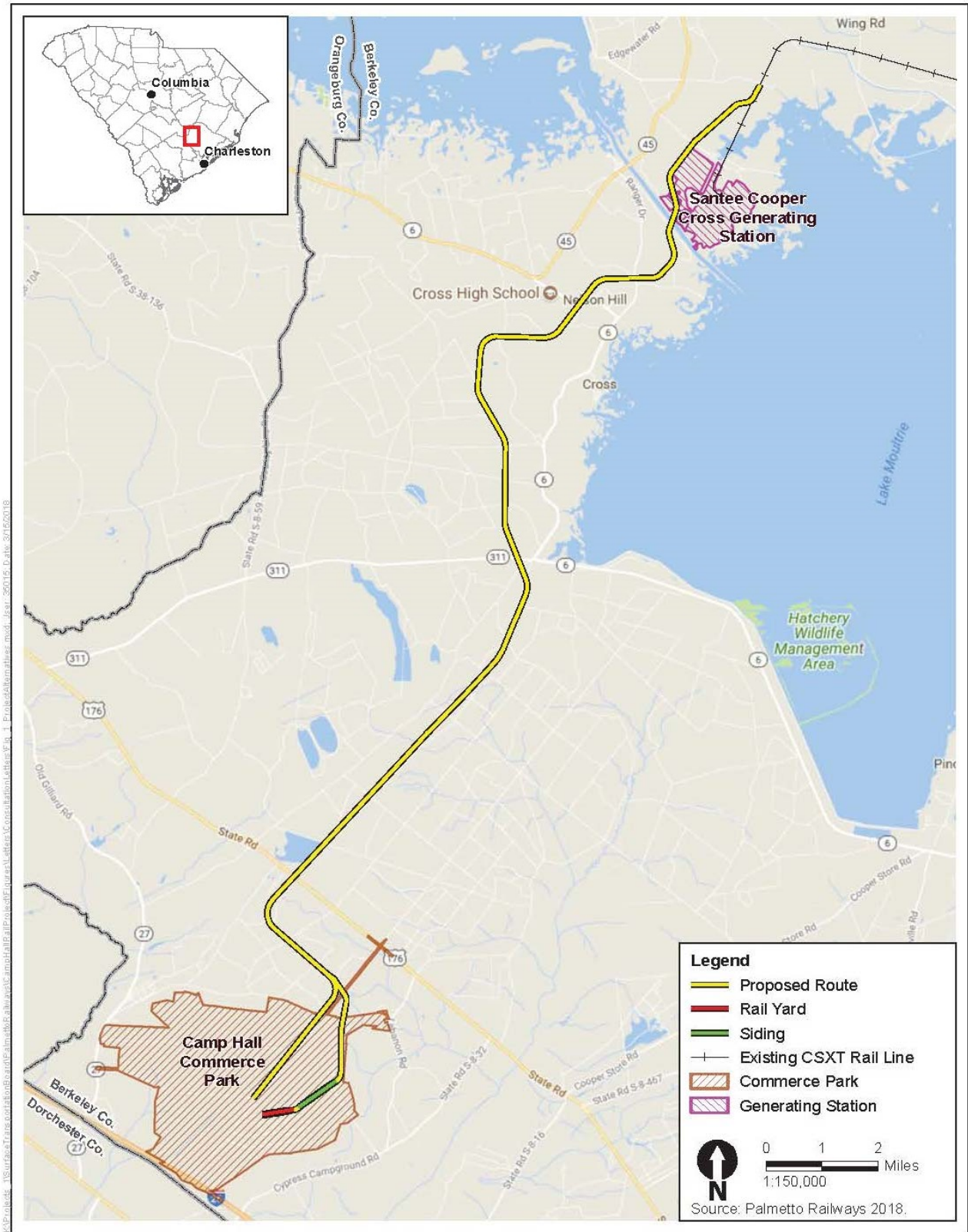
A handwritten signature in black ink, appearing to read "Victoria Rutson". The signature is written in a cursive style with a large initial "V".

Victoria Rutson  
Director  
Office of Environmental Analysis

Attachments:

- A. Map of Proposed Alignment
- B. NHPA Section 106 Consultation Options Form

# ATTACHMENT A: MAP OF PROPOSED ROUTE



**ATTACHMENT B: NATIONAL HISTORIC PRESERVATION ACT SECTION 106 CONSULTATION  
OPTIONS FORM**

Berkeley North Historical Society

Surface Transportation Board Docket No. FD 36095, Palmetto Railways – Construction and Operation  
Exemption—in Berkeley County, South Carolina.

Project Name: Palmetto Railways Proposed Rail Line

*Please check all the appropriate response(s) that apply from the list*

- \_\_\_\_\_ We have no interests associated with Palmetto Railways’ proposed rail line and further consultation with our organization is not required.
- \_\_\_\_\_ We want to continue to receive project information by mail and participate in the public involvement process.
- \_\_\_\_\_ We have an interest in Palmetto’s proposed rail line and want to participate as a “Consulting Party” in the Section 106 of the NHPA process.
- \_\_\_\_\_ We have included comments regarding potential historic properties in the project area and/or potential impacts to historic properties on the back of this form or on additional sheets.

Name of designated Berkeley North Historical Society contact for Section 106 Consultation for the Surface Transportation Board’s decision on whether to allow Palmetto Railways to construct and operate a new rail line in South Carolina:

**Please print**

Name: \_\_\_\_\_

Phone: \_\_\_\_\_

E-mail: \_\_\_\_\_

Signed: \_\_\_\_\_

Date: \_\_\_\_\_

Please mail to: Diana Wood  
FD No. 36095  
Surface Transportation Board  
c/o ICF  
8300 Lee Highway  
Fairfax, VA 22031





***SURFACE TRANSPORTATION BOARD***  
***Washington, DC 20423***

*Office of Environmental Analysis*

May 18, 2018

Michael D. Coker  
Executive Director  
Berkeley County Museum and Heritage Center  
950 Stony Landing Road  
Moncks Corner, SC 29461

Re: Docket No. FD 36095, Palmetto Railways—Construction and Operation Exemption—In Berkeley County, South Carolina; **Invitation to Section 106 Consultation**

Dear Mr. Coker:

This letter invites you to consult under Section 106 of the National Historic Preservation Act (Section 106) regarding the above-referenced rail line construction project. As you may know, on August 3, 2017, Palmetto Railways (Palmetto or Applicant) filed a petition with the Surface Transportation Board (Board), pursuant to 49 U.S.C. § 10502, for authority to construct and operate a 22.7-mile new rail line in Berkeley County, South Carolina.

The Board's Office of Environmental Analysis (OEA) and the United States Army Corps of Engineers, Charleston District (Corps) are conducting an environmental and historic preservation review of the proposed rail line construction project in compliance with the National Environmental Policy Act (NEPA) and related laws and regulations, including Section 106, and its implementing regulations at 36 C.F.R. Part 800.

This letter has two purposes:

- First, to learn whether Berkeley County Museum and Heritage Center is interested in participating as a Section 106 Consulting Party. We have enclosed a Consultation Options Form (Attachment B) that we hope makes it easier for you to select the level of involvement that you are interested in. If we do not hear back from you, we will assume that you do not want to participate as a Section 106 Consulting Party.
- Second, to provide an opportunity for you to submit comments or information on either historic properties and/or potential effects to historic properties that may be located in the area and that should be afforded close attention in the environmental analysis.

For your reference, Attachment A to this letter includes a map of the proposed route currently being considered. Additional information on this project is available on the project website at [camphallrailnepa.com](http://camphallrailnepa.com). Attachment B is the Consultations Options Form discussed above.

Michael D. Coker, Berkeley County Museum and Heritage Center

May 18, 2018

Page 2

Diana Wood of my staff is leading OEA's Section 106 consultation for the project. You may contact her at 202-245-0302 or [Diana.Wood@stb.gov](mailto:Diana.Wood@stb.gov) with any questions. You may also contact David Bauer of ICF OEA's independent third-party consultant, at [David.Bauer@icf.com](mailto:David.Bauer@icf.com).

Sincerely,

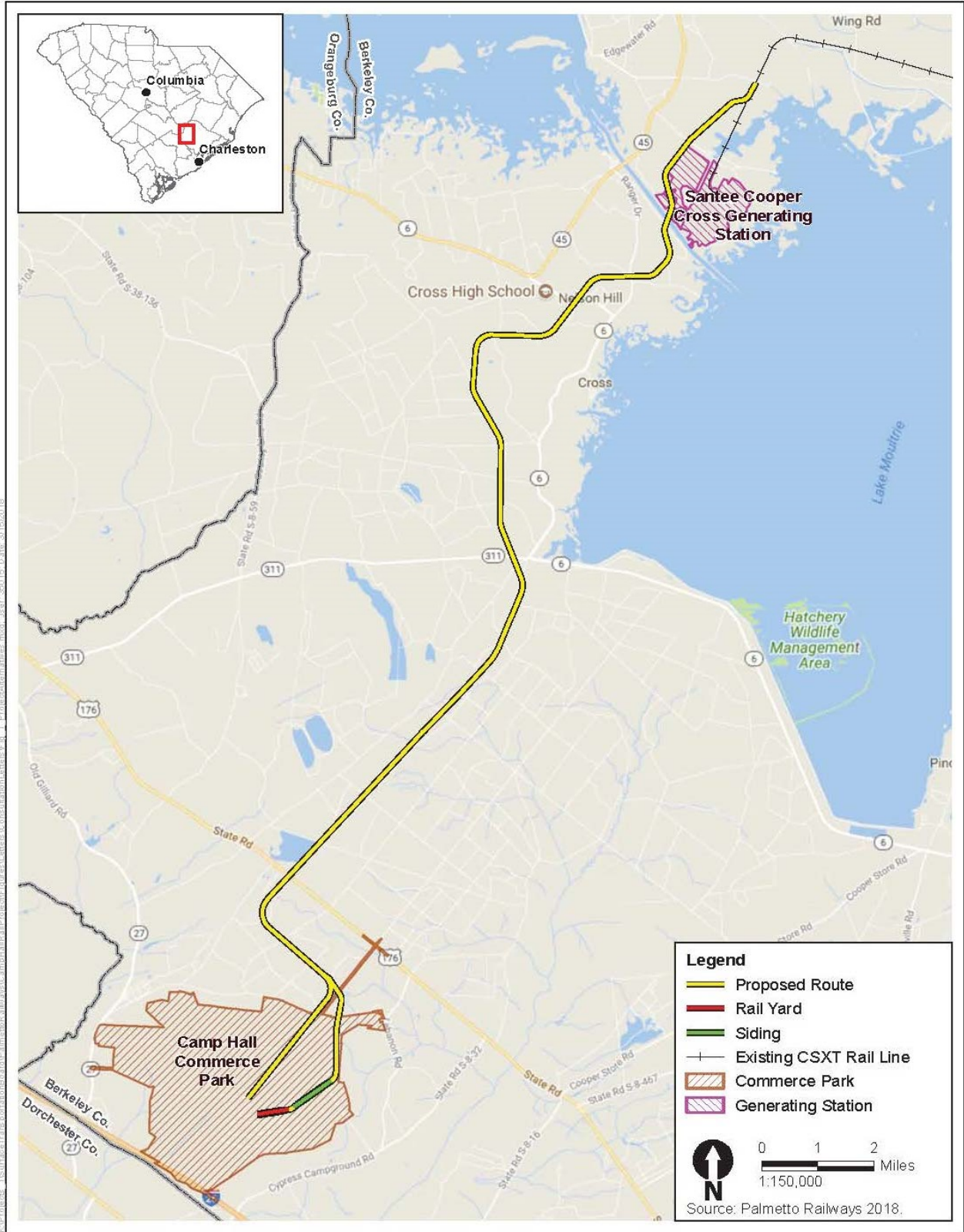
A handwritten signature in black ink that reads "Victoria Rutson". The signature is written in a cursive style with a large initial 'V'.

Victoria Rutson  
Director  
Office of Environmental Analysis

Attachments:

- A. Map of Proposed Alignment
- B. NHPA Section 106 Consultation Options Form

**ATTACHMENT A: MAP OF PROPOSED ROUTE**



C:\Projects\Transportation\GIS\MapDocs\PalmettoRailways\Figures\MapDocs\Consultation\Attachment\_A\_Map\_of\_Proposed\_Route.mxd, 2/20/15, Date: 3/15/2018

**ATTACHMENT B: NATIONAL HISTORIC PRESERVATION ACT SECTION 106 CONSULTATION  
OPTIONS FORM**

Berkeley County Museum and Heritage Center

Surface Transportation Board Docket No. FD 36095, Palmetto Railways – Construction and Operation  
Exemption—in Berkeley County, South Carolina.

Project Name: Palmetto Railways Proposed Rail Line

*Please check all the appropriate response(s) that apply from the list*

- \_\_\_\_\_ We have no interests associated with Palmetto Railways’ proposed rail line and further consultation with our organization is not required.
- \_\_\_\_\_ We want to continue to receive project information by mail and participate in the public involvement process.
- \_\_\_\_\_ We have an interest in Palmetto’s proposed rail line and want to participate as a “Consulting Party” in the Section 106 of the NHPA process.
- \_\_\_\_\_ We have included comments regarding potential historic properties in the project area and/or potential impacts to historic properties on the back of this form or on additional sheets.

Name of Berkeley County Museum and Heritage Center designated contact for Section 106 Consultation for the Surface Transportation Board’s decision on whether to allow Palmetto Railways to construct and operate a new rail line in South Carolina:

**Please print**

Name: \_\_\_\_\_

Phone: \_\_\_\_\_

E-mail: \_\_\_\_\_

Signed: \_\_\_\_\_

Date: \_\_\_\_\_

Please mail to: Diana Wood  
FD No. 36095  
Surface Transportation Board  
c/o ICF  
8300 Lee Highway  
Fairfax, VA 22031



***SURFACE TRANSPORTATION BOARD***  
***Washington, DC 20423***

*Office of Environmental Analysis*

May 18, 2018

Raleigh West  
Executive Director  
Lord Berkeley Conservation Trust  
223 East Main Street  
Suite B  
Moncks Corner, SC 29461

Re: Docket No. FD 36095, Palmetto Railways—Construction and Operation Exemption—In Berkeley County, South Carolina; **Invitation to Section 106 Consultation**

Dear Raleigh West:

This letter invites you to consult under Section 106 of the National Historic Preservation Act (Section 106) regarding the above-referenced rail line construction project. As you may know, on August 3, 2017, Palmetto Railways (Palmetto or Applicant) filed a petition with the Surface Transportation Board (Board), pursuant to 49 U.S.C. § 10502, for authority to construct and operate a 22.7-mile new rail line in Berkeley County, South Carolina.

The Board's Office of Environmental Analysis (OEA) and the United States Army Corps of Engineers, Charleston District (Corps) are conducting an environmental and historic preservation review of the proposed rail line construction project in compliance with the National Environmental Policy Act (NEPA) and related laws and regulations, including Section 106, and its implementing regulations at 36 C.F.R. Part 800.

This letter has two purposes:

- First, to learn whether Lord Berkeley Conservation Trust is interested in participating as a Section 106 Consulting Party. We have enclosed a Consultation Options Form (Attachment B) that we hope makes it easier for you to select the level of involvement that you are interested in. If we do not hear back from you, we will assume that you do not want to participate as a Section 106 Consulting Party.
- Second, to provide an opportunity for you to submit comments or information on either historic properties and/or potential effects to historic properties that may be located in the area and that should be afforded close attention in the environmental analysis.

For your reference, Attachment A to this letter includes a map of the proposed route currently being considered. Additional information on this project is available on the project website at [caphallrailnepa.com](http://caphallrailnepa.com). Attachment B is the Consultations Options Form discussed above.

Raleigh West, Lord Berkeley Conservation Trust

May 18, 2018

Page 2

Diana Wood of my staff is leading OEA's Section 106 consultation for the project. You may contact her at 202-245-0302 or [Diana.Wood@stb.gov](mailto:Diana.Wood@stb.gov) with any questions. You may also contact David Bauer of ICF OEA's independent third-party consultant, at [David.Bauer@icf.com](mailto:David.Bauer@icf.com).

Sincerely,

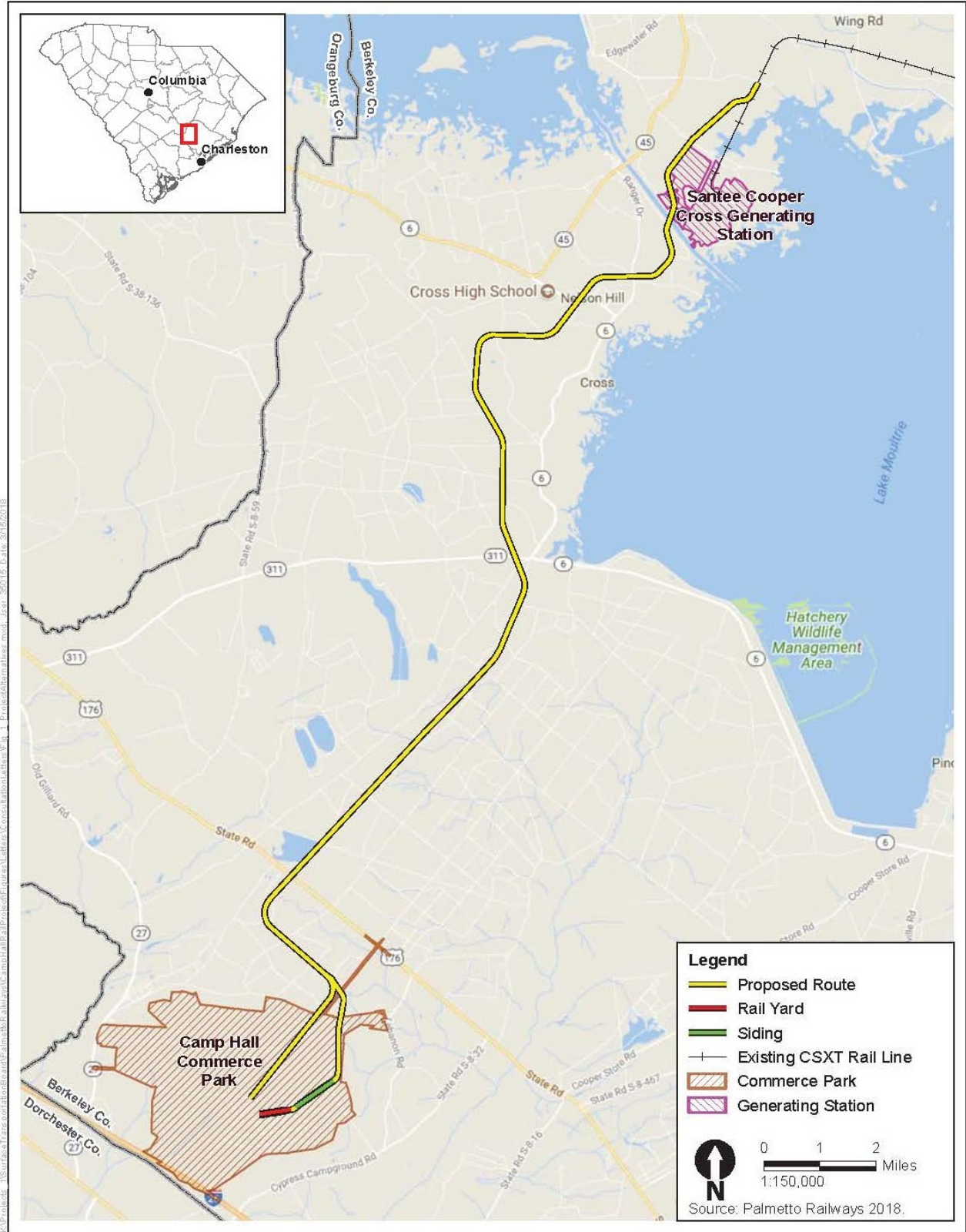
A handwritten signature in black ink, appearing to read "Victoria Rutson". The signature is written in a cursive style with a large initial "V".

Victoria Rutson  
Director  
Office of Environmental Analysis

Attachments:

- A. Map of Proposed Alignment
- B. NHPA Section 106 Consultation Options Form

# ATTACHMENT A: MAP OF PROPOSED ROUTE



C:\Projects\Transportation\Bartlett\GIS\MapServer\MapServer\Projects\PalmettoRailways\MapServer\Layers\Consultation\Attachment\_A\_Map\_of\_Proposed\_Route.mxd, 3/15/2018

**ATTACHMENT B: NATIONAL HISTORIC PRESERVATION ACT SECTION 106 CONSULTATION  
OPTIONS FORM**

Lord Berkeley Conservation Trust

Surface Transportation Board Docket No. FD 36095, Palmetto Railways – Construction and Operation  
Exemption—in Berkeley County, South Carolina.

Project Name: Palmetto Railways Proposed Rail Line

*Please check all the appropriate response(s) that apply from the list*

- \_\_\_\_\_ We have no interests associated with Palmetto Railways’ proposed rail line and further consultation with our organization is not required.
- \_\_\_\_\_ We want to continue to receive project information by mail and participate in the public involvement process.
- \_\_\_\_\_ We have an interest in Palmetto’s proposed rail line and want to participate as a “Consulting Party” in the Section 106 of the NHPA process.
- \_\_\_\_\_ We have included comments regarding potential historic properties in the project area and/or potential impacts to historic properties on the back of this form or on additional sheets.

Name of Lord Berkeley Conservation Trust designated contact for Section 106 Consultation for the Surface Transportation Board’s decision on whether to allow Palmetto Railways to construct and operate a new rail line in South Carolina:

**Please print**

Name: \_\_\_\_\_

Phone: \_\_\_\_\_

E-mail: \_\_\_\_\_

Signed: \_\_\_\_\_

Date: \_\_\_\_\_

Please mail to: Diana Wood  
FD No. 36095  
Surface Transportation Board  
c/o ICF  
8300 Lee Highway  
Fairfax, VA 22031





***SURFACE TRANSPORTATION BOARD***  
***Washington, DC 20423***

*Office of Environmental Analysis*

May 18, 2018

Brad Sale  
Old Santee Canal Park  
900 Stony Landing Drive  
Moncks Corner, SC 29461

Re: Docket No. FD 36095, Palmetto Railways—Construction and Operation Exemption—In Berkeley County, South Carolina; **Invitation to Section 106 Consultation**

Dear Mr. Sale:

This letter invites you to consult under Section 106 of the National Historic Preservation Act (Section 106) regarding the above-referenced rail line construction project. As you may know, on August 3, 2017, Palmetto Railways (Palmetto or Applicant) filed a petition with the Surface Transportation Board (Board), pursuant to 49 U.S.C. § 10502, for authority to construct and operate a 22.7-mile new rail line in Berkeley County, South Carolina.

The Board's Office of Environmental Analysis (OEA) and the United States Army Corps of Engineers, Charleston District (Corps) are conducting an environmental and historic preservation review of the proposed rail line construction project in compliance with the National Environmental Policy Act (NEPA) and related laws and regulations, including Section 106, and its implementing regulations at 36 C.F.R. Part 800.

This letter has two purposes:

- First, to learn whether Old Santee Canal Park is interested in participating as a Section 106 Consulting Party. We have enclosed a Consultation Options Form (Attachment B) that we hope makes it easier for you to select the level of involvement that you are interested in. If we do not hear back from you, we will assume that you do not want to participate as a Section 106 Consulting Party.
- Second, to provide an opportunity for you to submit comments or information on either historic properties and/or potential effects to historic properties that may be located in the area and that should be afforded close attention in the environmental analysis.

For your reference, Attachment A to this letter includes a map of the proposed route currently being considered. Additional information on this project is available on the project website at [camphallrailnepa.com](http://camphallrailnepa.com). Attachment B is the Consultations Options Form discussed above.

Brad Sale, Old Santee Canal Park

May 18, 2018

Page 2

Diana Wood of my staff is leading OEA's Section 106 consultation for the project. You may contact her at 202-245-0302 or [Diana.Wood@stb.gov](mailto:Diana.Wood@stb.gov) with any questions. You may also contact David Bauer of ICF OEA's independent third-party consultant, at [David.Bauer@icf.com](mailto:David.Bauer@icf.com).

Sincerely,

A handwritten signature in black ink that reads "Victoria Rutson". The signature is written in a cursive style with a large initial "V".

Victoria Rutson  
Director  
Office of Environmental Analysis

Attachments:

- A. Map of Proposed Alignment
- B. NHPA Section 106 Consultation Options Form



**ATTACHMENT B: NATIONAL HISTORIC PRESERVATION ACT SECTION 106 CONSULTATION  
OPTIONS FORM**

Old Santee Canal Park

Surface Transportation Board Docket No. FD 36095, Palmetto Railways – Construction and Operation  
Exemption—in Berkeley County, South Carolina.

Project Name: Palmetto Railways Proposed Rail Line

*Please check all the appropriate response(s) that apply from the list*

- \_\_\_\_\_ We have no interests associated with Palmetto Railways’ proposed rail line and further consultation with our organization is not required.
- \_\_\_\_\_ We want to continue to receive project information by mail and participate in the public involvement process.
- \_\_\_\_\_ We have an interest in Palmetto’s proposed rail line and want to participate as a “Consulting Party” in the Section 106 of the NHPA process.
- \_\_\_\_\_ We have included comments regarding potential historic properties in the project area and/or potential impacts to historic properties on the back of this form or on additional sheets.

Name of Old Santee Canal Park designated contact for Section 106 Consultation for the Surface Transportation Board’s decision on whether to allow Palmetto Railways to construct and operate a new rail line in South Carolina:

**Please print**

Name: \_\_\_\_\_

Phone: \_\_\_\_\_

E-mail: \_\_\_\_\_

Signed: \_\_\_\_\_

Date: \_\_\_\_\_

Please mail to: Diana Wood  
FD No. 36095  
Surface Transportation Board  
c/o ICF  
8300 Lee Highway  
Fairfax, VA 22031



***SURFACE TRANSPORTATION BOARD***  
***Washington, DC 20423***

*Office of Environmental Analysis*

May 18, 2018

Natalie Cappuccio Britt  
Palmetto Conservation  
722 King Street  
Columbia, SC 29205

Re: Docket No. FD 36095, Palmetto Railways—Construction and Operation Exemption—In Berkeley County, South Carolina; **Invitation to Section 106 Consultation**

Dear Ms. Britt:

This letter invites you to consult under Section 106 of the National Historic Preservation Act (Section 106) regarding the above-referenced rail line construction project. As you may know, on August 3, 2017, Palmetto Railways (Palmetto or Applicant) filed a petition with the Surface Transportation Board (Board), pursuant to 49 U.S.C. § 10502, for authority to construct and operate a 22.7-mile new rail line in Berkeley County, South Carolina.

The Board's Office of Environmental Analysis (OEA) and the United States Army Corps of Engineers, Charleston District (Corps) are conducting an environmental and historic preservation review of the proposed rail line construction project in compliance with the National Environmental Policy Act (NEPA) and related laws and regulations, including Section 106, and its implementing regulations at 36 C.F.R. Part 800.

This letter has two purposes:

- First, to learn whether Palmetto Conservation is interested in participating as a Section 106 Consulting Party. We have enclosed a Consultation Options Form (Attachment B) that we hope makes it easier for you to select the level of involvement that you are interested in. If we do not hear back from you, we will assume that you do not want to participate as a Section 106 Consulting Party.
- Second, to provide an opportunity for you to submit comments or information on either historic properties and/or potential effects to historic properties that may be located in the area and that should be afforded close attention in the environmental analysis.

For your reference, Attachment A to this letter includes a map of the proposed route currently being considered. Additional information on this project is available on the project website at [camphallrailnepa.com](http://camphallrailnepa.com). Attachment B is the Consultations Options Form discussed above.

Natalie Cappuccio Britt, Palmetto Conservation

May 18, 2018

Page 2

Diana Wood of my staff is leading OEA's Section 106 consultation for the project. You may contact her at 202-245-0302 or [Diana.Wood@stb.gov](mailto:Diana.Wood@stb.gov) with any questions. You may also contact David Bauer of ICF OEA's independent third-party consultant, at [David.Bauer@icf.com](mailto:David.Bauer@icf.com).

Sincerely,

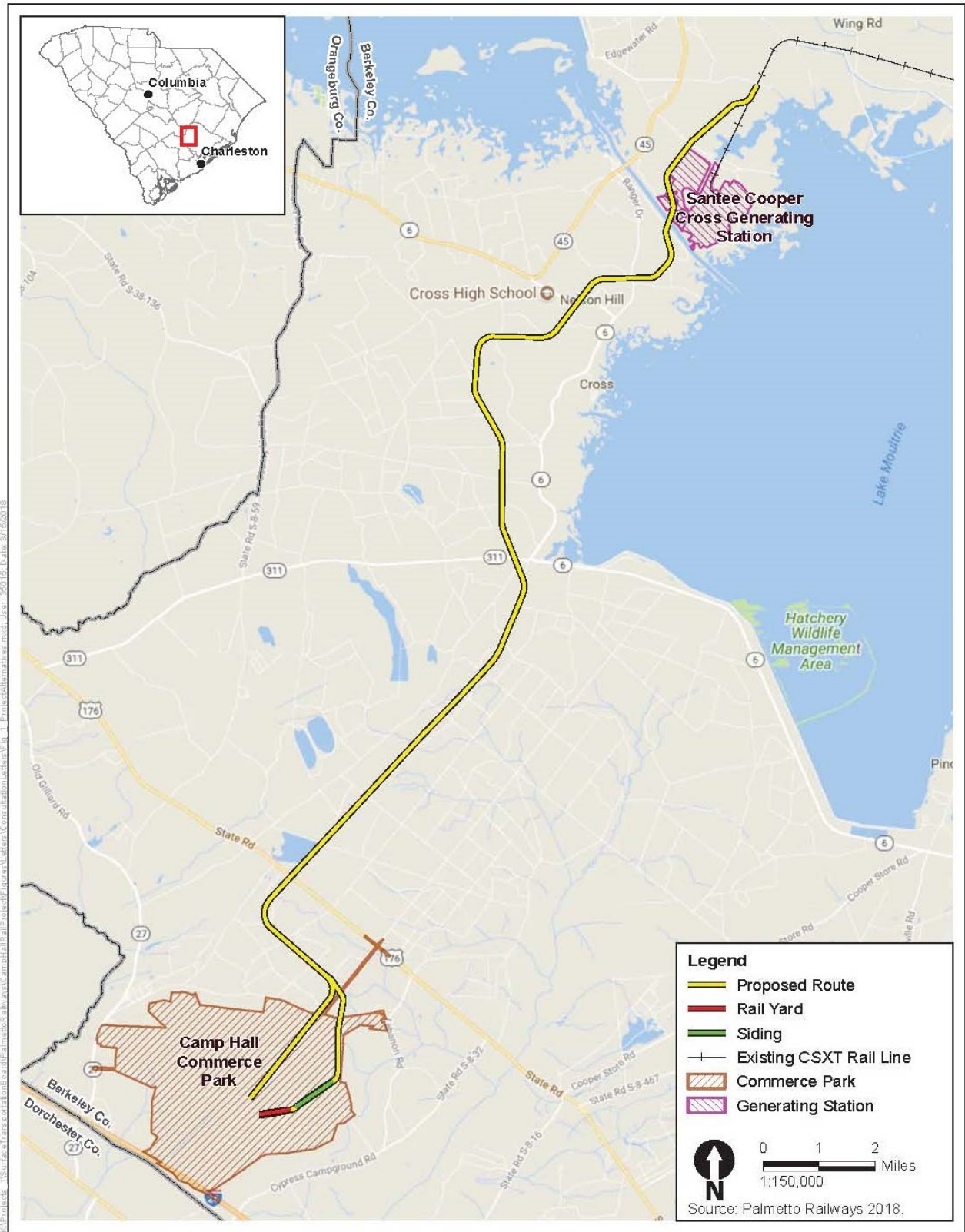
A handwritten signature in black ink that reads "Victoria Rutson". The signature is written in a cursive style with a large initial "V".

Victoria Rutson  
Director  
Office of Environmental Analysis

Attachments:

- A. Map of Proposed Alignment
- B. NHPA Section 106 Consultation Options Form

# ATTACHMENT A: MAP OF PROPOSED ROUTE



Project: USRouteTransitRouteBartlett; subproject: PalmettoRailProposedFigures; ConsultationLetter: 1; ProjectID: 2018; Date: 3/15/2018

**ATTACHMENT B: NATIONAL HISTORIC PRESERVATION ACT SECTION 106 CONSULTATION  
OPTIONS FORM**

Palmetto Conservation

Surface Transportation Board Docket No. FD 36095, Palmetto Railways – Construction and Operation  
Exemption—in Berkeley County, South Carolina.

Project Name: Palmetto Railways Proposed Rail Line

*Please check all the appropriate response(s) that apply from the list*

- \_\_\_\_\_ We have no interests associated with Palmetto Railways’ proposed rail line and further consultation with our organization is not required.
- \_\_\_\_\_ We want to continue to receive project information by mail and participate in the public involvement process.
- \_\_\_\_\_ We have an interest in Palmetto’s proposed rail line and want to participate as a “Consulting Party” in the Section 106 of the NHPA process.
- \_\_\_\_\_ We have included comments regarding potential historic properties in the project area and/or potential impacts to historic properties on the back of this form or on additional sheets.

Name of Palmetto Conservation designated contact for Section 106 Consultation for the Surface Transportation Board’s decision on whether to allow Palmetto Railways to construct and operate a new rail line in South Carolina:

**Please print**

Name: \_\_\_\_\_

Phone: \_\_\_\_\_

E-mail: \_\_\_\_\_

Signed: \_\_\_\_\_

Date: \_\_\_\_\_

Please mail to: Diana Wood  
FD No. 36095  
Surface Transportation Board  
c/o ICF  
8300 Lee Highway  
Fairfax, VA 22031





***SURFACE TRANSPORTATION BOARD***  
***Washington, DC 20423***

*Office of Environmental Analysis*

May 18, 2018

Sam Bennett  
Vice President of Administration  
Santee Cooper  
1 Riverwood Dr  
Moncks Corner, SC 29461

Re: Docket No. FD 36095, Palmetto Railways—Construction and Operation Exemption—In Berkeley County, South Carolina; **Invitation to Section 106 Consultation**

Dear Sam Bennett:

This letter invites you to consult under Section 106 of the National Historic Preservation Act (Section 106) regarding the above-referenced rail line construction project. As you may know, on August 3, 2017, Palmetto Railways (Palmetto or Applicant) filed a petition with the Surface Transportation Board (Board), pursuant to 49 U.S.C. § 10502, for authority to construct and operate a 22.7-mile new rail line in Berkeley County, South Carolina.

The Board's Office of Environmental Analysis (OEA) and the United States Army Corps of Engineers, Charleston District (Corps) are conducting an environmental and historic preservation review of the proposed rail line construction project in compliance with the National Environmental Policy Act (NEPA) and related laws and regulations, including Section 106, and its implementing regulations at 36 C.F.R. Part 800.

This letter has two purposes:

- First, to learn whether Santee Cooper is interested in participating as a Section 106 Consulting Party. We have enclosed a Consultation Options Form (Attachment B) that we hope makes it easier for you to select the level of involvement that you are interested in. If we do not hear back from you, we will assume that you do not want to participate as a Section 106 Consulting Party.
- Second, to provide an opportunity for you to submit comments or information on either historic properties and/or potential effects to historic properties that may be located in the area and that should be afforded close attention in the environmental analysis.

For your reference, Attachment A to this letter includes a map of the proposed route currently being considered. Additional information on this project is available on the project website at [camphallrailnepa.com](http://camphallrailnepa.com). Attachment B is the Consultations Options Form discussed above.

Sam Bennett, Santee Cooper

May 18, 2018

Page 2

Diana Wood of my staff is leading OEA's Section 106 consultation for the project. You may contact her at 202-245-0302 or [Diana.Wood@stb.gov](mailto:Diana.Wood@stb.gov) with any questions. You may also contact David Bauer of ICF OEA's independent third-party consultant, at [David.Bauer@icf.com](mailto:David.Bauer@icf.com).

Sincerely,

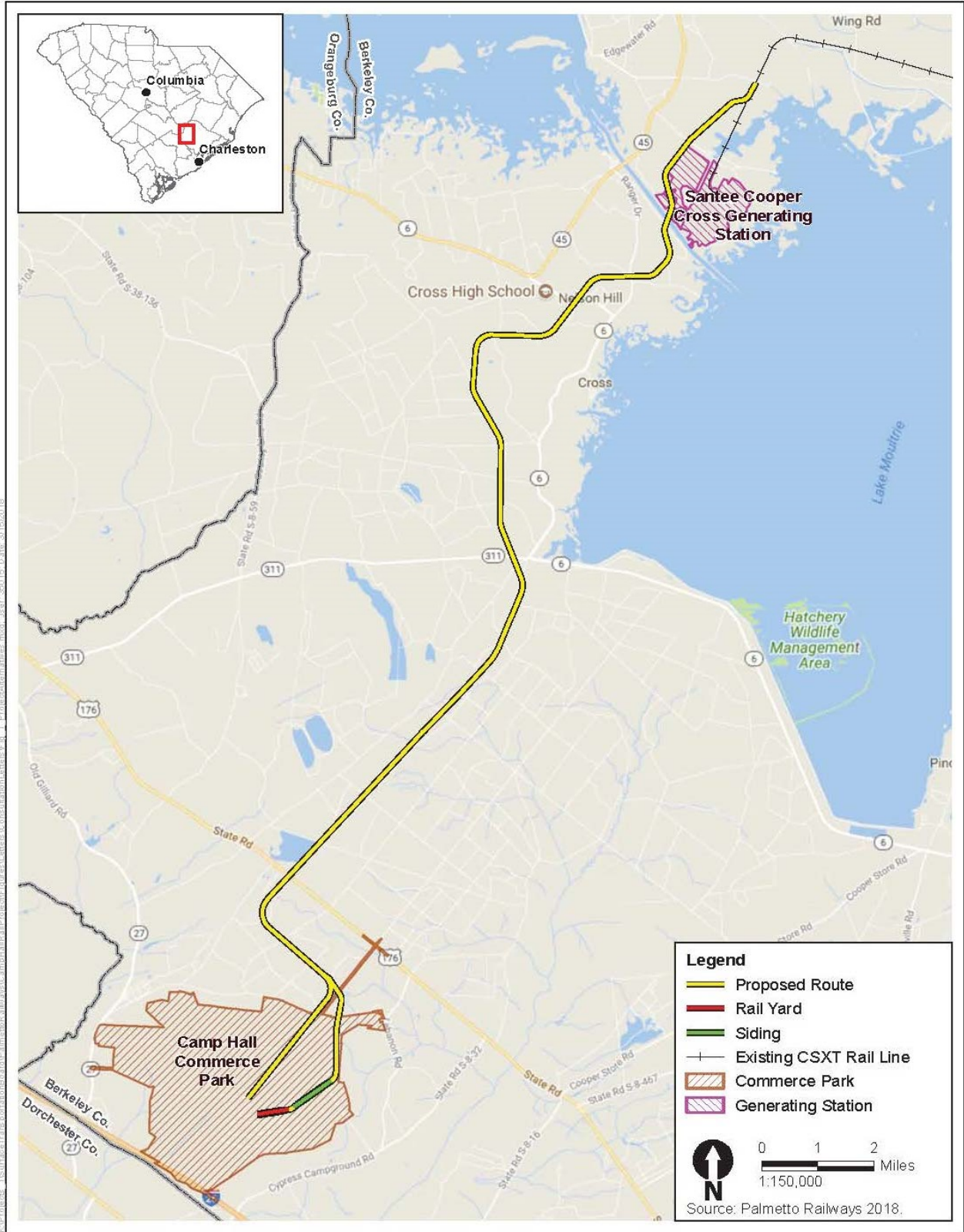
A handwritten signature in black ink that reads "Victoria Rutson". The signature is written in a cursive style with a large initial "V" and "R".

Victoria Rutson  
Director  
Office of Environmental Analysis

Attachments:

- A. Map of Proposed Alignment
- B. NHPA Section 106 Consultation Options Form

**ATTACHMENT A: MAP OF PROPOSED ROUTE**



Project: USRouteTransitSouthCarolina; File: s:\data\csmobile\Railroad\Figures\Legend\Consultation\attachA\_1\_ProposedRoutes.mxd; User: 25015; Date: 3/15/2018

**ATTACHMENT B: NATIONAL HISTORIC PRESERVATION ACT SECTION 106 CONSULTATION  
OPTIONS FORM**

Santee Cooper

Surface Transportation Board Docket No. FD 36095, Palmetto Railways – Construction and Operation  
Exemption—in Berkeley County, South Carolina.

Project Name: Palmetto Railways Proposed Rail Line

*Please check all the appropriate response(s) that apply from the list*

- \_\_\_\_\_ We have no interests associated with Palmetto Railways’ proposed rail line and further consultation with our organization is not required.
- \_\_\_\_\_ We want to continue to receive project information by mail and participate in the public involvement process.
- \_\_\_\_\_ We have an interest in Palmetto’s proposed rail line and want to participate as a “Consulting Party” in the Section 106 of the NHPA process.
- \_\_\_\_\_ We have included comments regarding potential historic properties in the project area and/or potential impacts to historic properties on the back of this form or on additional sheets.

Name of Santee Cooper designated contact for Section 106 Consultation for the Surface Transportation Board’s decision on whether to allow Palmetto Railways to construct and operate a new rail line in South Carolina:

**Please print**

Name: \_\_\_\_\_

Phone: \_\_\_\_\_

E-mail: \_\_\_\_\_